



Roxtec knock-out frame transit

Lightweight cast-in transit

The Roxtec knock-out frame (KOF) is a lightweight cast-in multi-cable transit that keeps your site dry during and after construction. The built-in knock-out plate maintains an environmental seal until it is knocked out prior to cable routing and installation of sealing components. The standard Roxtec RM sealing modules are adaptable to cables of different sizes and can be used to build in spare capacity in the transit.

The KOF with plate can also provide spare capacity for future needs. By adding KOF adapters, the overall frame depth can easily be increased in steps of 50mm to fit walls of various thickness and at the same time eliminate the need for casting molds. The KOF has an integrated clip-together feature which provides mechanical connections to form space efficient clusters.



- Corrosion resistant
- Light-weight
- Tightness during building phase

Product characteristics



Fire rated



IP/UL NEMA

Structure of installation



Concrete

Mounting type



Casting

Ratings & certificates

Fire

- E/EI rating according to EN 13501

Tightness

- IP 68

Frame dimensions

mm/kg

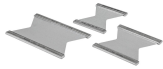
The frame variants below are a limited selection. For the full range of frames and configurations, please visit [roxtec.com](https://www.roxtec.com).

Product	Frame openings	Packing space	External dimensions WxHxD	Aperture dimensions w x h	Weight	Art. no
KOF 6x1 D=100	1	120 x 180	226 x 324 x 100	187 x 285	0.6	249058



Sealing components

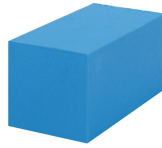
Sealing components



Stayplate



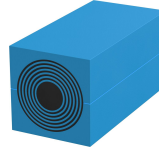
sealing kit



RM solid compensation module



Wedge & Wedge kit



RM module with Multidiameter™



Pre-compression tools



Lubricant

Accessories

For detailed information, please visit [roxtec.com](https://www.roxtec.com).

The product information provided by Roxtec does not release the purchaser of the Roxtec system, or part thereof, from the obligation to independently determine the suitability of the products for the intended process, installation and/or use.

Roxtec gives no guarantee for the Roxtec system or any part thereof and assumes no liability for any loss or damage whatsoever, whether direct, indirect, consequential, loss of profit or otherwise, occurred or caused by the Roxtec systems or installations containing components not manufactured by an authorized manufacturer and/or occurred or caused by the use of the Roxtec system in a manner or for an application other than for which the Roxtec system was designed or intended.

Roxtec expressly excludes any implied warranties of merchantability and fitness for a particular purpose and all other express or implied representations and warranties provided by statute or common law. User determines suitability of the Roxtec system for intended use and assumes all risk and liability in connection therewith. In no event shall Roxtec be liable for indirect, consequential, punitive, special, exemplary or incidental damages or losses.

The Roxtec products are offered and sold in accordance with the conditions of the Roxtec General Terms of Sales. The latest version of the Roxtec General Terms of Sales can be downloaded from <https://www.roxtec.com/en/about-us/about-roxtec/general-terms-of-sales/>

We reserve the right to make changes to the product and technical information without further notice. Any errors in print or entry are no claims for indemnity. The content of this publication is the property of Roxtec International AB and is protected by copyright.

This document was generated on: 2025-12-18



Roxtec ® and Multidiameter ® are registered trademarks of Roxtec in Sweden and/or other countries.